

St Andrews CE Primary School

BH2019/02080

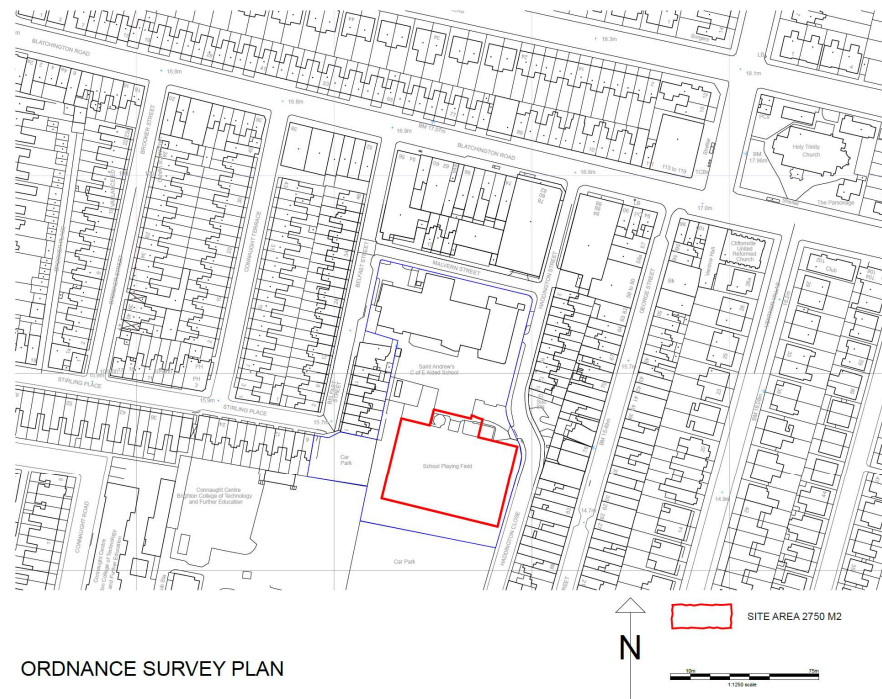


**Brighton & Hove
City Council**

Application Description

- Artificial all-weather grass pitch
- Replace existing grass pitch
- 3m high perimeter fencing
- 6x 10m floodlights
- Community use

Existing Location Plan



ORDNANCE SURVEY PLAN

1782-P-01

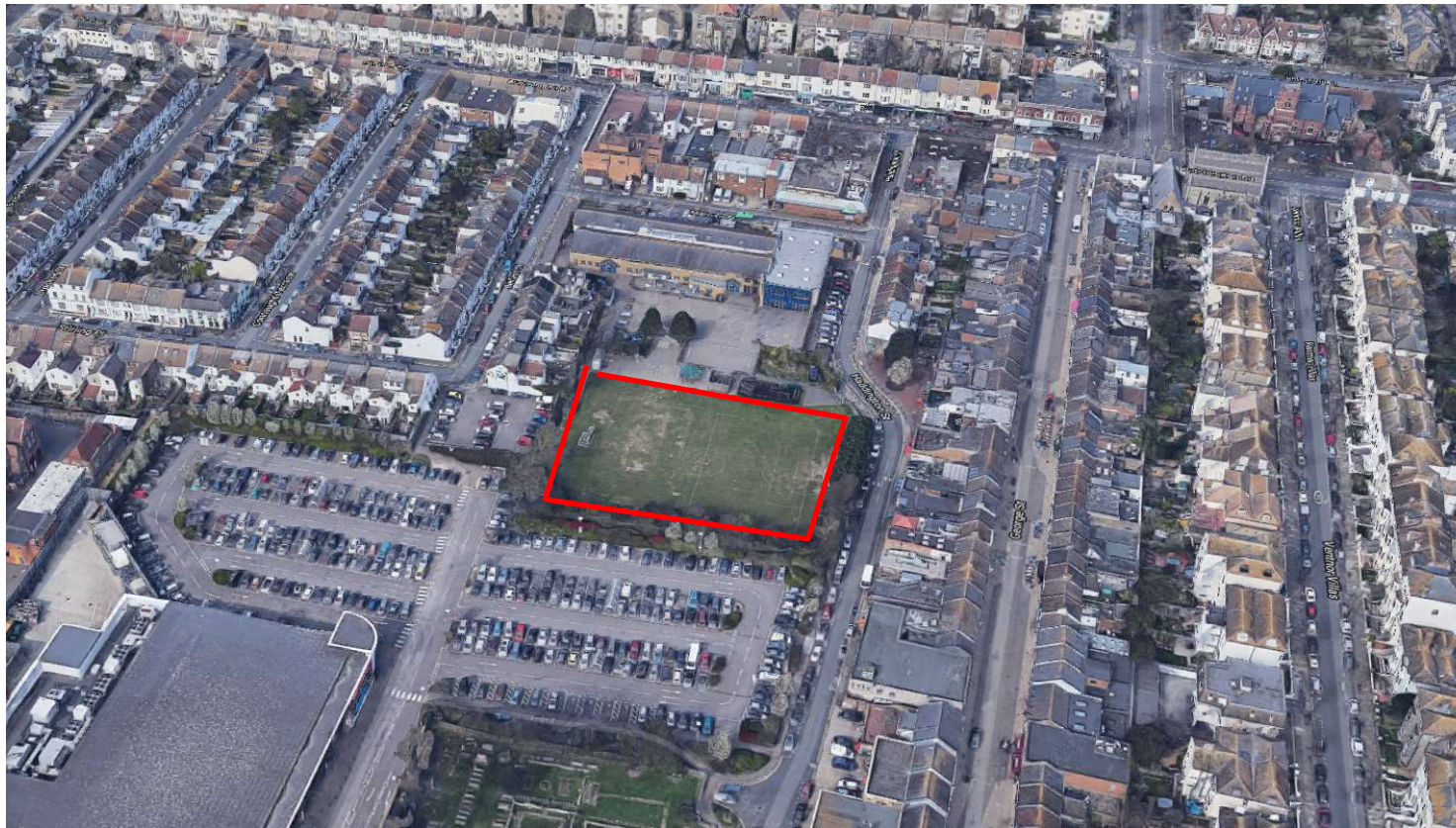


Aerial photos of site

4



3D Aerial photo of site



Brighton & Hove
City Council

3D Aerial photo of site



Street photos of site



PHOTO 3



PHOTO 4



PHOTO 5



PHOTO 6



PHOTO 7



PHOTO 2



PHOTO 1



PHOTO 8



PHOTO 9



PHOTO 13



PHOTO 12



PHOTO 11



PHOTO 10

STREET VIEWS



School Entrance /Parking – Belfast St



Brighton & Hove
City Council

Views from east - Haddington St

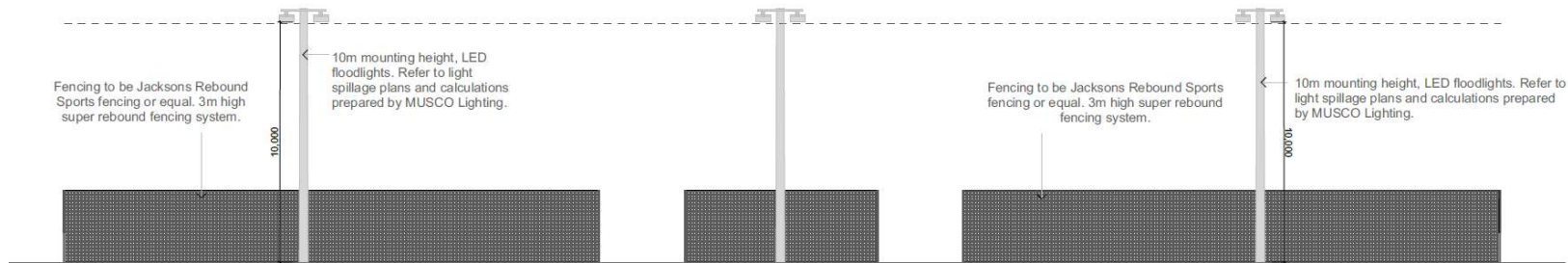
6



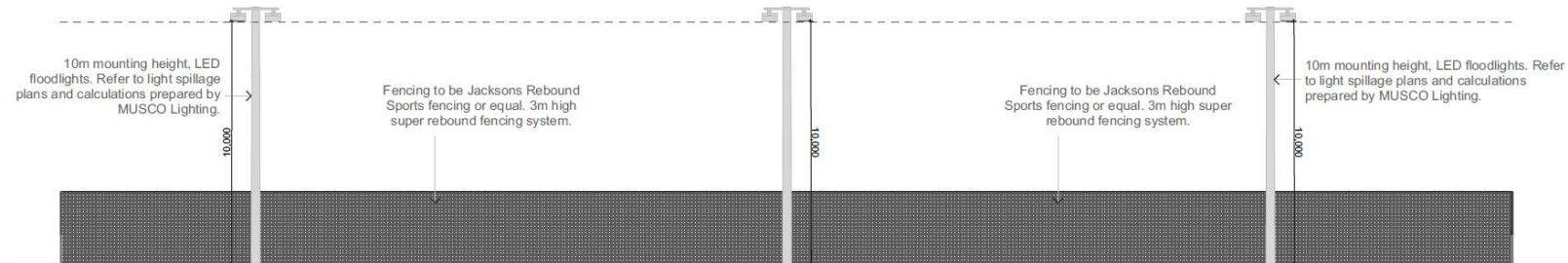
Proposed Site Plan



Proposed Elevations



NORTH FACING ELEVATION



SOUTH FACING ELEVATION



Brighton & Hove
City Council

Key Considerations

- Loss of natural grass pitch;
- Enhanced sports provision for school and community;
- Visual impact;
- Noise and light impact;
- Highways implications.



Brighton & Hove
City Council

Conclusion and Planning Balance

- Enhance the quality of sports provision for school and community;
- In context and character with site and surroundings;
- No impact upon views of the listed St Andrews Church or harm to setting of nearby conservation areas;
- Subject to conditions, appropriate in terms of impact on amenity, highways, archaeology and arboriculture.
- **Recommend: Approval**

